

# HOW TO BUILD YOUR ENTERPRISE DATA WAREHOUSE

IN 4 SIMPLE STEPS USING DWA

## STEP 1

### IDENTIFY AND MODEL YOUR SOURCE DATA

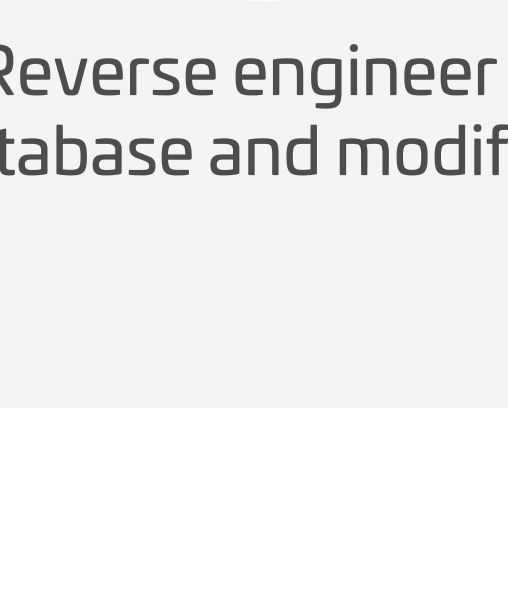
Bring data from disparate sources together using a single-source or multi-source data model. DWA offers you two options to build a source data model.

#### SOURCE MODELS

##### Single-Source Data Model



Design a data model from scratch

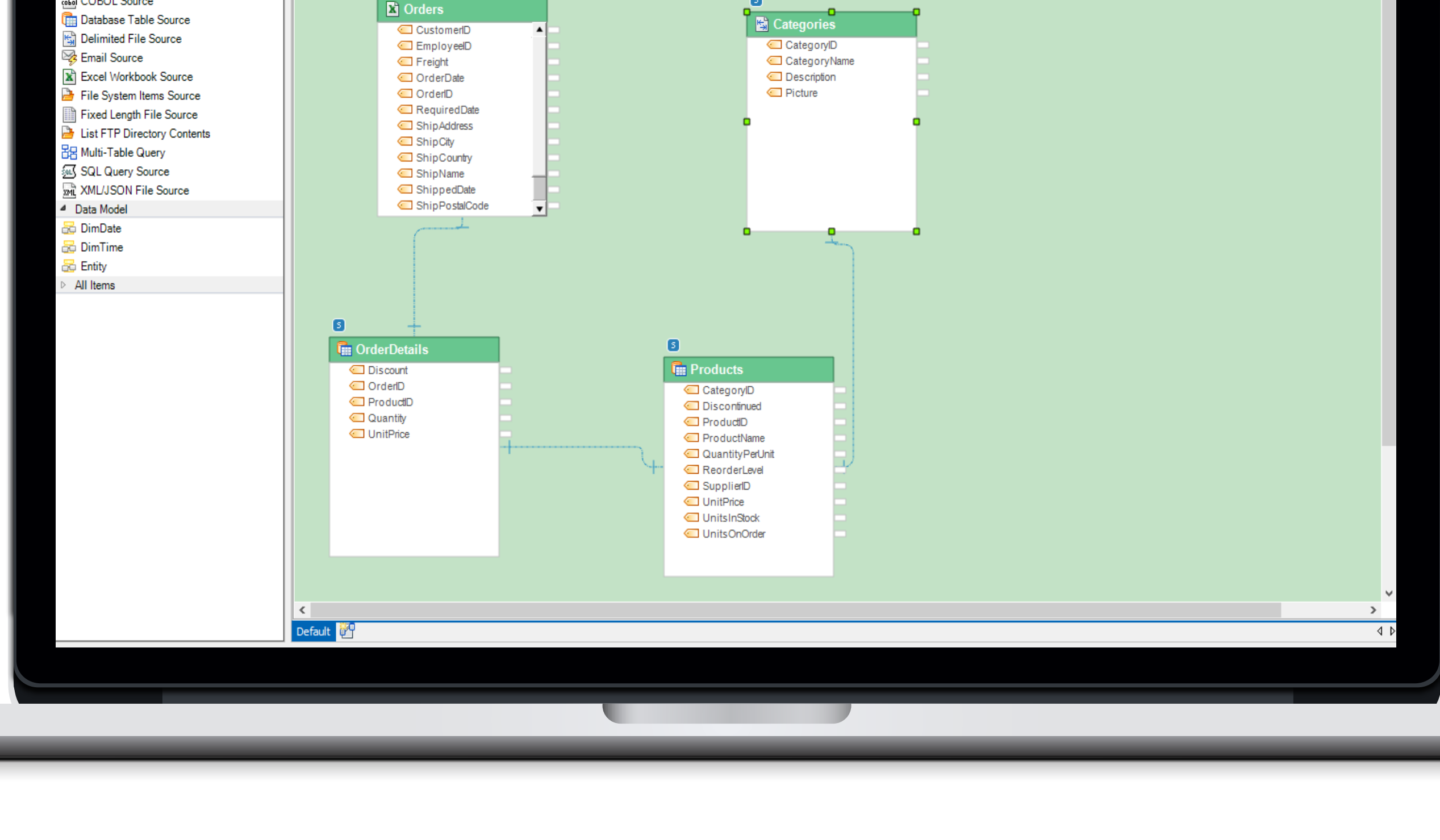


Reverse engineer a database and modify it

OR

##### Multi-Source Data Model-VDM

You can also include multiple relational or non-relational data sources and create a multi-source virtual data model (VDM).



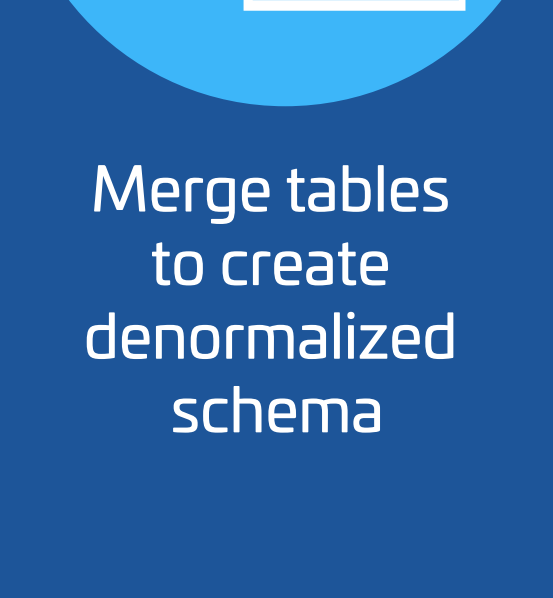
A VDM creates an abstraction layer so users can connect to unstructured, semi-structured, and structured data directly and prototype reports easily.

## STEP 2

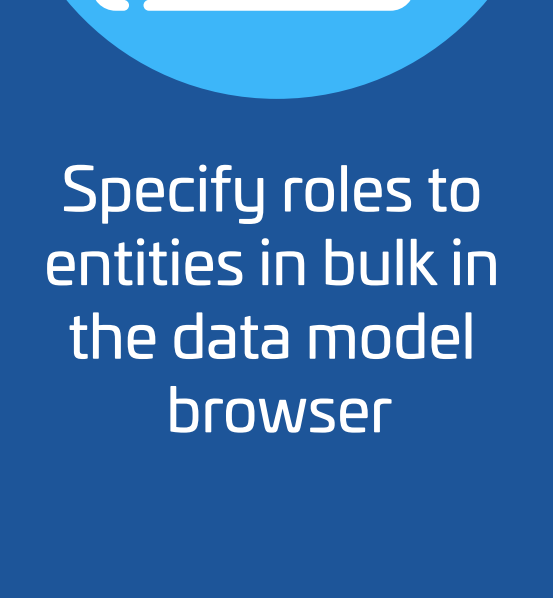
### MODEL YOUR DESTINATION DATA

#### DIMENSIONAL MODELS

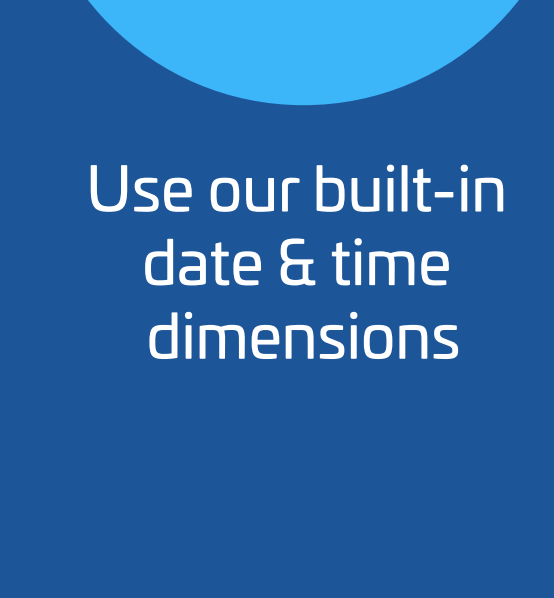
DWA allows you to build dimensional models by scratch or by deriving data from source data models. You can:



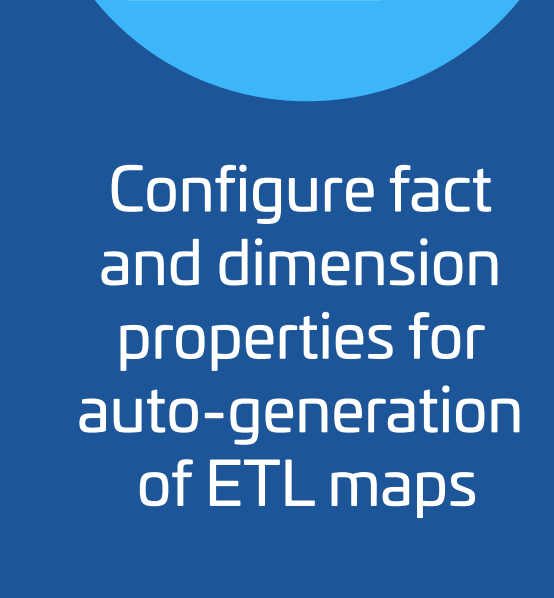
Merge tables to create denormalized schema



Specify roles to entities in bulk in the data model browser



Use our built-in date & time dimensions

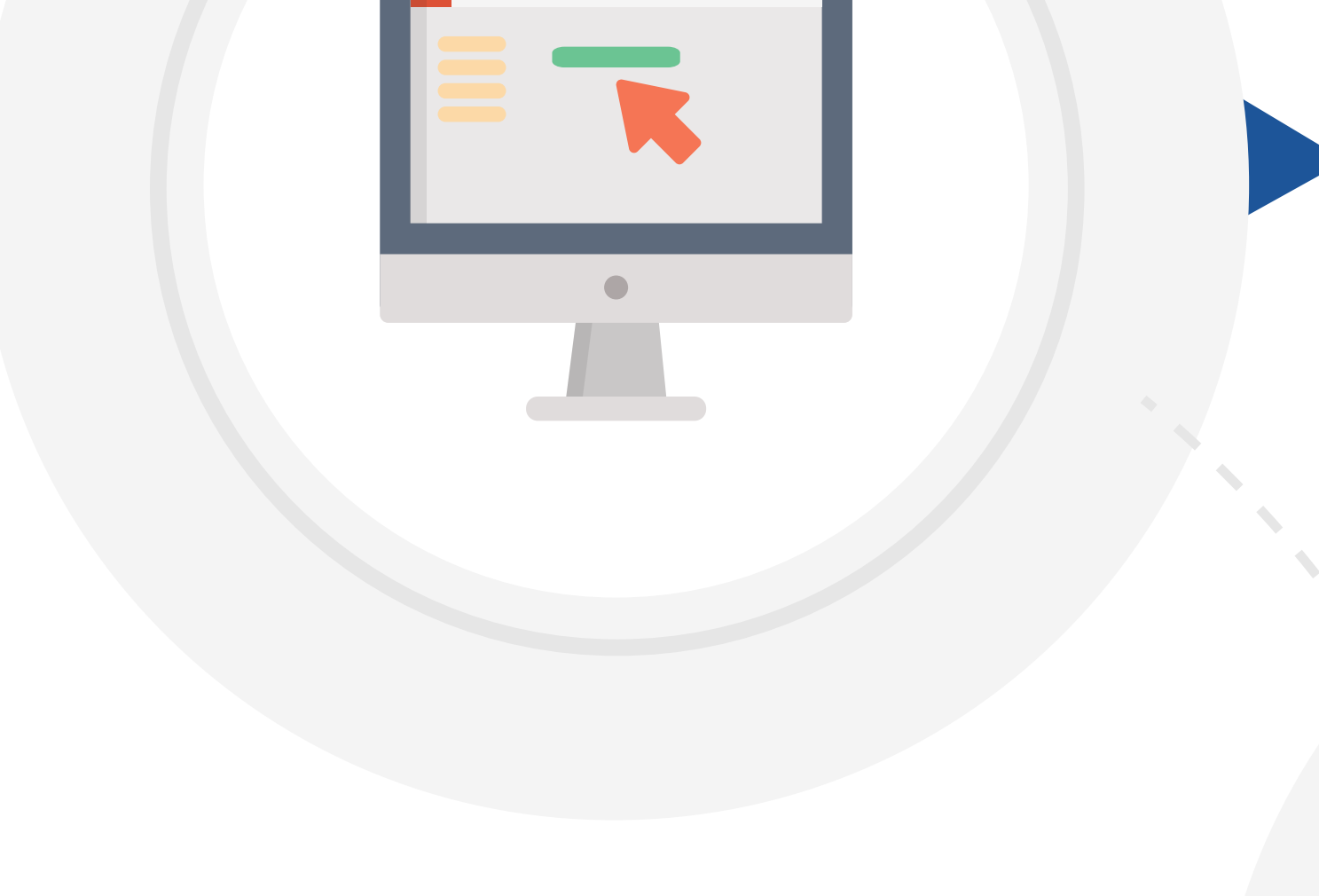


Configure fact and dimension properties for auto-generation of ETL maps

## STEP 3

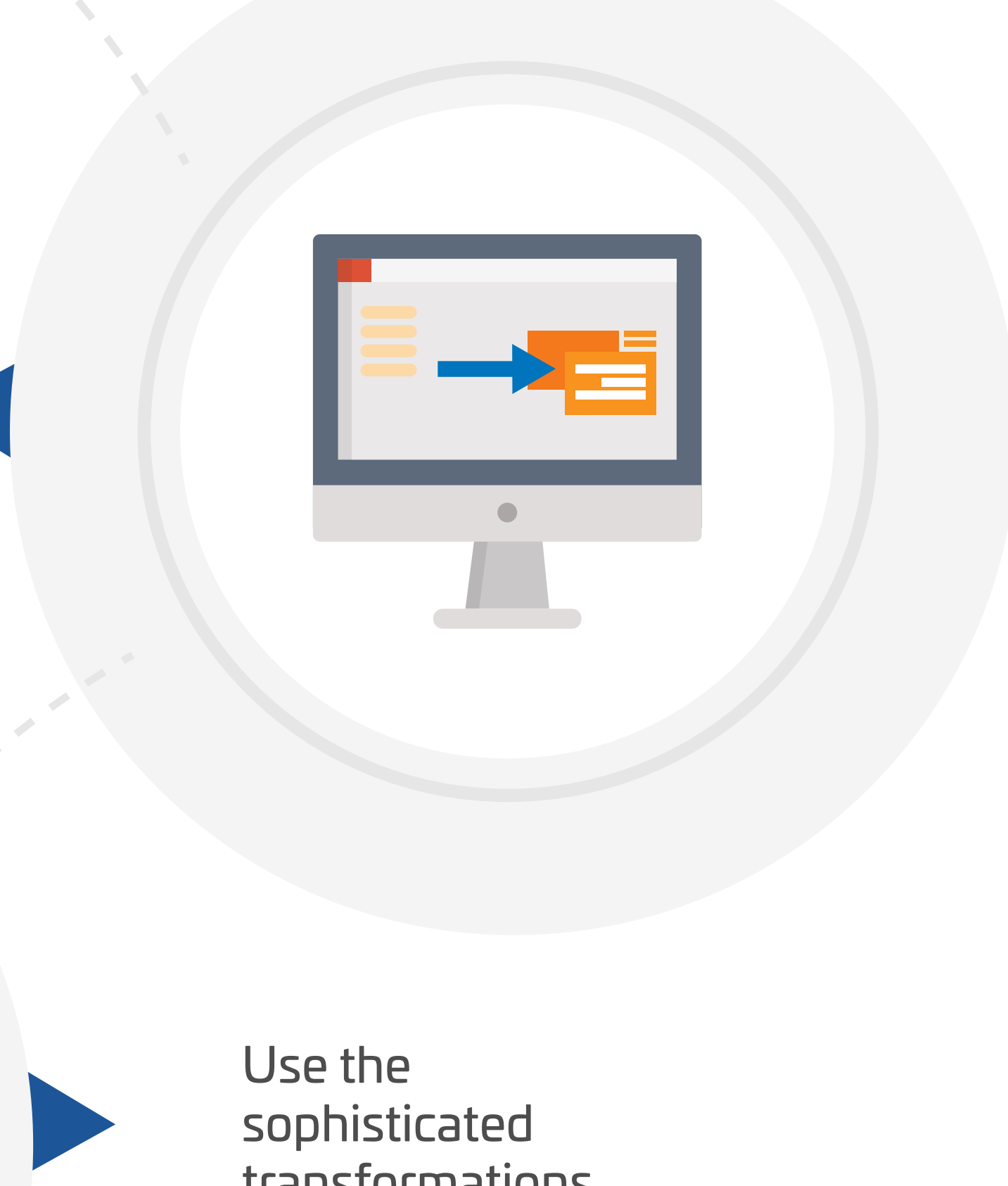
### MAP & GENERATE DATAFLOWS AUTOMATICALLY

DWA allows you to easily define mapping and settings, and automatically generate dataflows.



Choose source and destination models

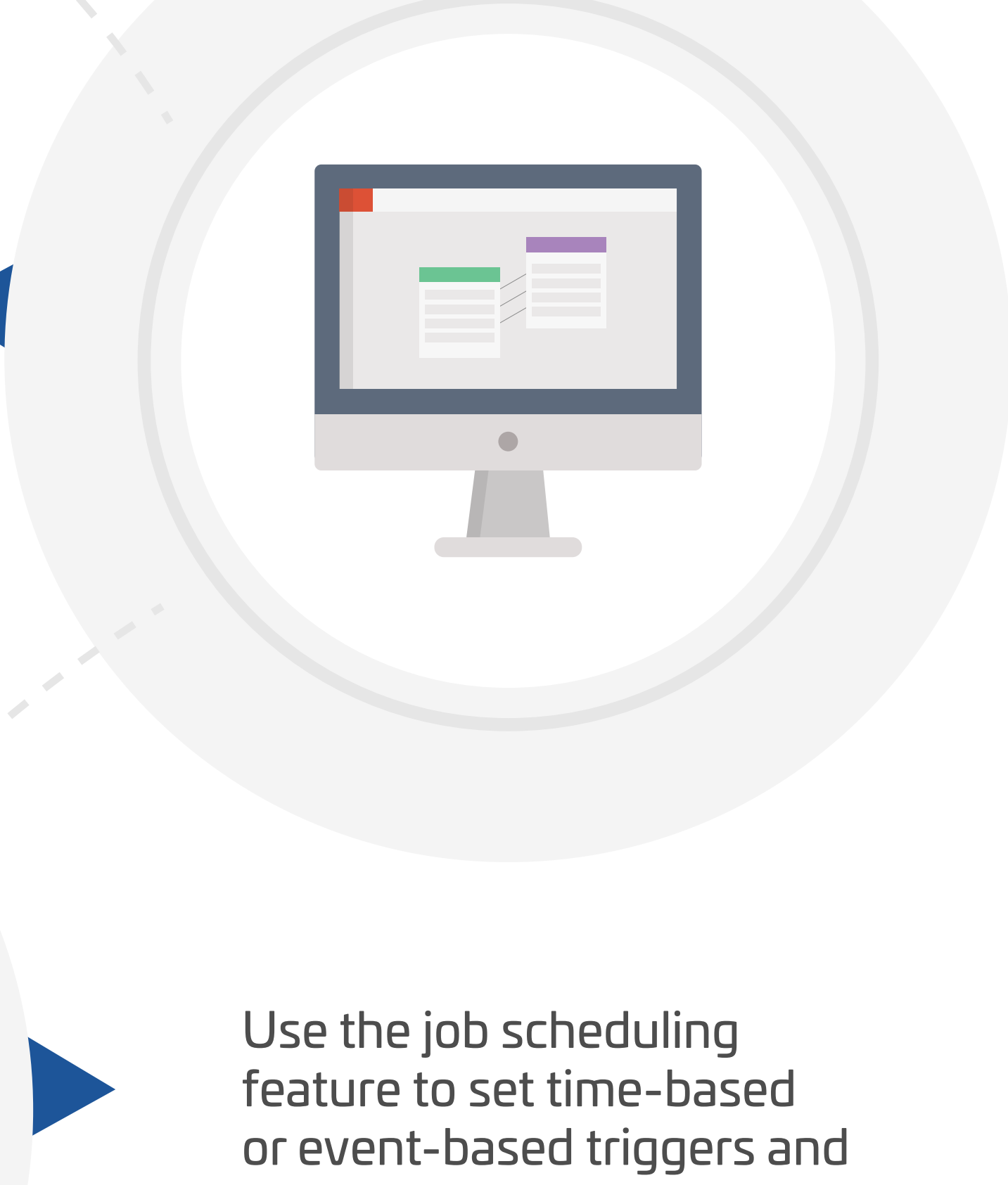
Use the auto-mapping functionality to automatically map destination entities from a single or a combination of source entities



Use the sophisticated transformations available



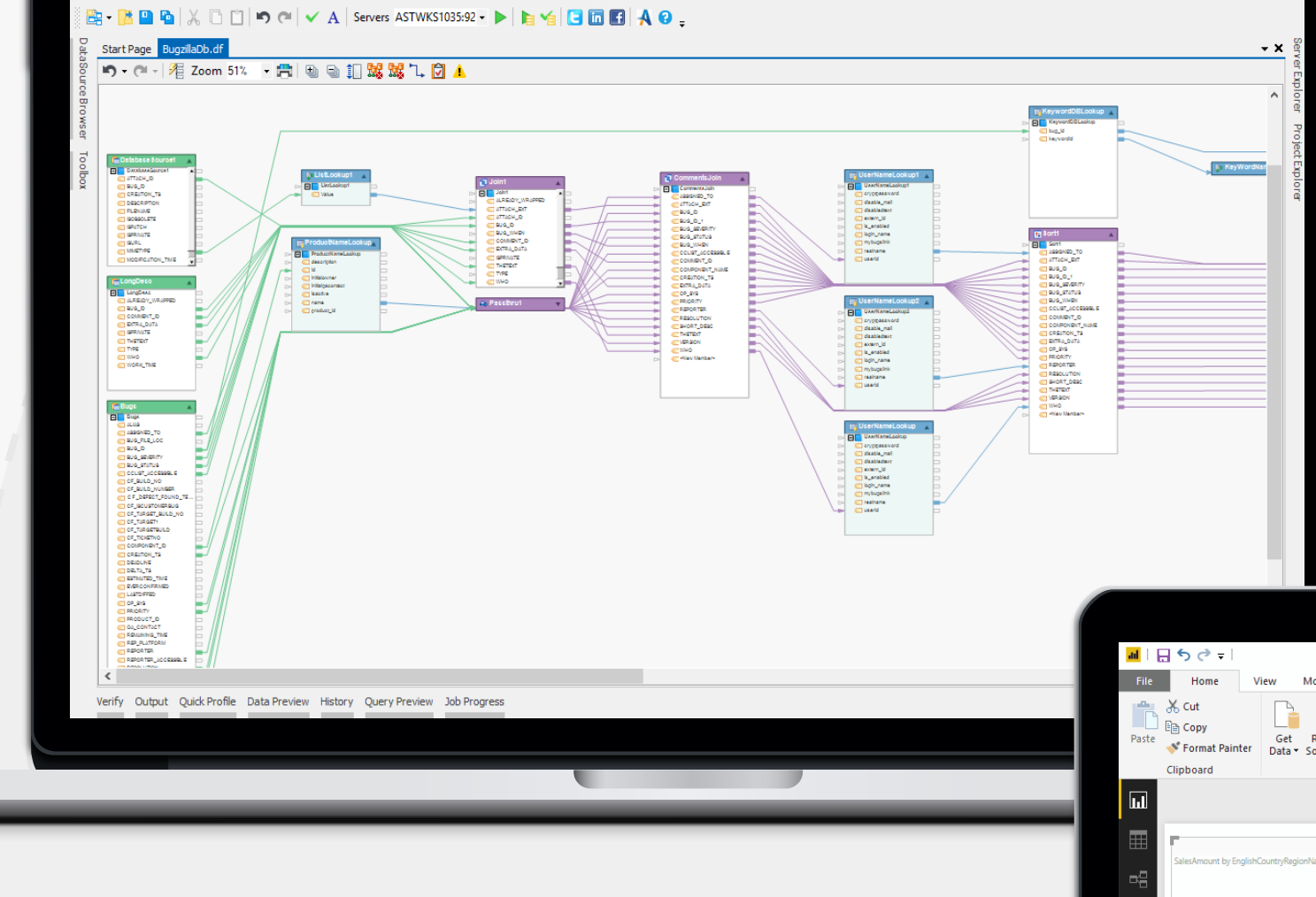
Auto-generate dataflows and perform custom modifications



Use the job scheduling feature to set time-based or event-based triggers and run jobs automatically

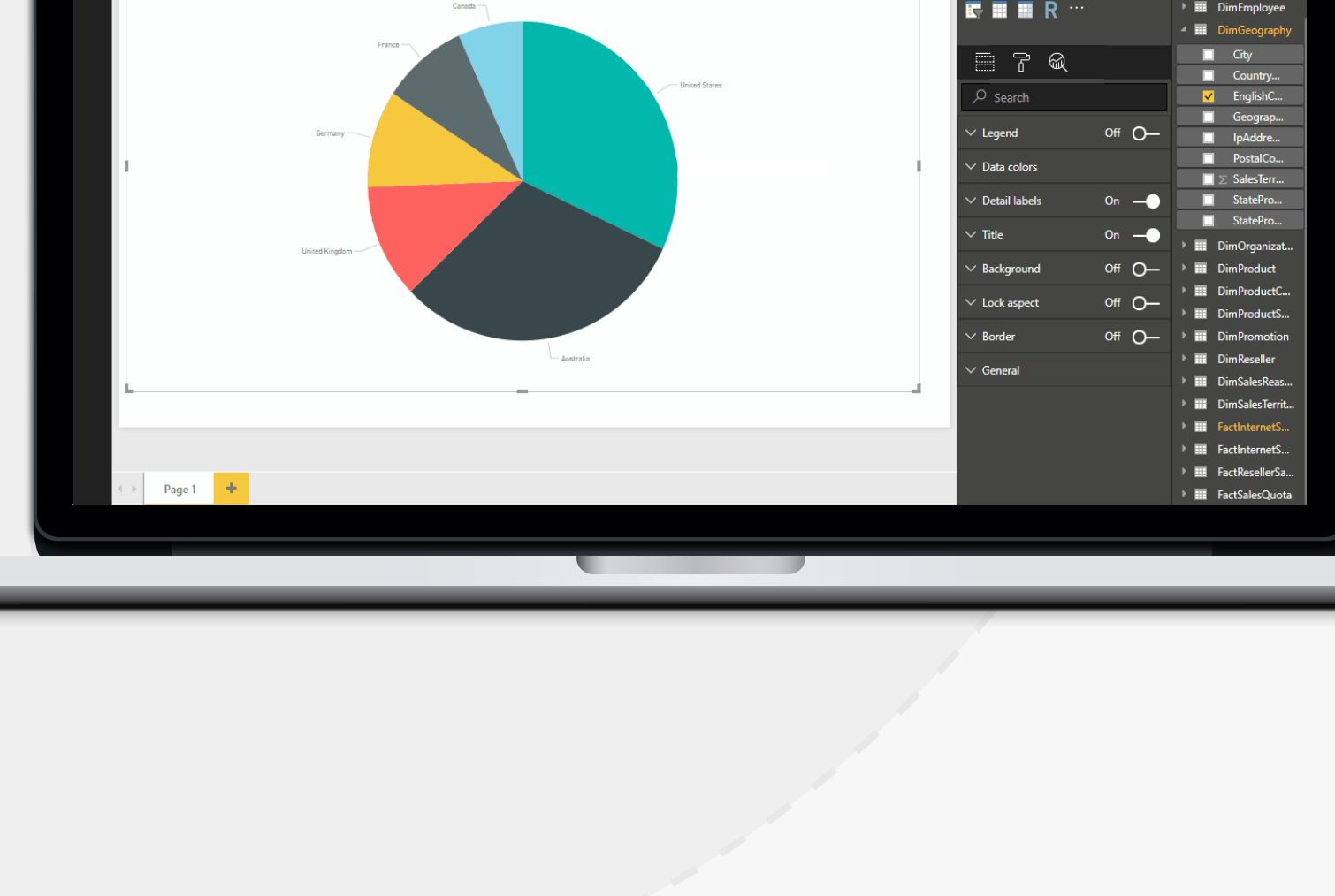
## STEP 4

### VISUALIZE & ANALYZE



The last step is to create a data flow for integration with Tableau or PowerBI...

...to present data in an interactive and easy-to-understand format so that frontline business users can gain insights quickly.



**DWA Accelerator**

Built upon Astera's industrial-strength ETL engine and refined by years of use by Fortune 1000 companies, Astera's DWA Accelerator provides advanced data warehouse automation capabilities to build enterprise data warehouses in hours and days rather than months and years.

See it in action!

[Request A Personalized Demo](#)

